



STATE OF BASIC EDUCATION



November 28, 2017



DEPED



AT A GLANCE



MANDATE



The constitution commands the state to **give priority to education**, and to protect and promote the rights of all citizens to **quality education at all levels** and to take appropriate steps to make education **accessible to all**.

(Article 14, Section 1 of the Philippine Constitution)

DepEd Vision



**We dream of Filipinos
who passionately love their country
and whose values and competencies
enable them to realize their full potential
and contribute meaningfully to building the nation.**

**As a learner-centered public institution,
the Department of Education
continuously improves itself
to better serve its stakeholders.**

Mandate, Vision, Core Values

DepEd Mandate

The **Department of Education (DepEd)** formulates, implements, and coordinates policies, plans, programs and projects in the areas of formal and non-formal basic education. It supervises all elementary and secondary education institutions, including alternative learning systems, both public and private; and provides for the establishment and maintenance of a complete, adequate, and integrated system of basic education relevant to the goals of national development.

Team Vision

By 2022, we will have nation-loving and competent lifelong learners able to respond to challenges and opportunities through the delivery of quality, accessible, relevant and liberating K to 12 Program by a modern, professional, pro-active, **nimble**, trusted and nurturing DepEd.

Core Values

**Maka-Diyos, Makatao
Makakalikasan, Makabansa**

MISSION

To protect and promote the right of every Filipino to quality, equitable, culture-based and complete basic education where:

Students learn in a child-friendly, gender-sensitive, safe and motivating environment;

Teachers facilitate learning and constantly nurture every learner;

Administrators and staff, as stewards of the institution, ensure an enabling and supportive environment for effective learning to happen; and

Family, community and other stakeholders are actively engaged and share responsibility for developing lifelong learners.

SCHOOLS

46,663
public schools

14,064
private schools



DEPED PERSONNEL



722,710

TEACHING PERSONNEL

687,229

**TEACHING-RELATED
PERSONNEL**

46,379

**ADMINISTRATIVE & SUPPORT
STAFF**

27,367

NON-TEACHING PERSONNEL

10,917

LEARNERS



26,629,845

KINDERGARTEN

2,216,114

ELEMENTARY

13,616,266

JUNIOR HIGH SCHOOL

7,973,874

SENIOR HIGH SCHOOL

2,823,591

from: SY 2017-2018 LIS Quick Count as of August 5, 2017

SHS Enrolment by Tracks and Strands



60.27%
Academic
 921,894 enrollees



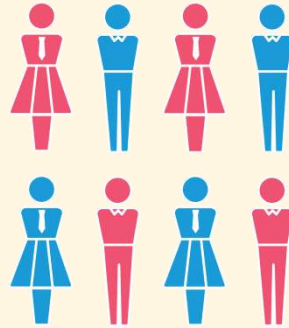
39.15%
**Technical-Vocational-
 Livelihood**
 598,841 enrollees



0.38%
Arts and Design
 5,813 enrollees



0.20%
Sports
 3,059 enrollees



1,529,607

Grade 11

Program	Total	Percentage
Accountancy, Business and Management	219,346	14.34%
General Academic	329,630	21.55%
Humanities and Social Sciences	143,477	9.38 %
Science, Technology, Engineering and Mathematics	226,688	14.82 %
Pre-Baccalaureate Maritime	2,753	0.18 %

Anticipated SHS completers by end of SY 2017-2018



60.11%
Academic
777,814 enrollees



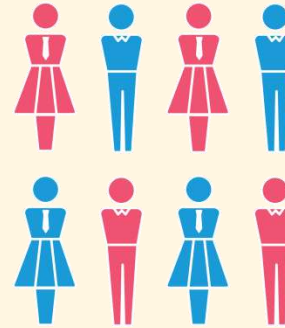
39.29%
**Technical-Vocational-
Livelihood**
508, 406 enrollees



0.41%
Arts and Design
5,305 enrollees



0.19%
Sports
2,459 enrollees



1,293,984

**Anticipated 1st Batch
of Completers**

Program	Total	Percentage
Accountancy, Business and Management	186,593	14.42%
General Academic	265,784	20.54%
Humanities and Social Sciences	125,258	9.68 %
Science, Technology, Engineering and Mathematics	197,203	15.24 %
Pre-Baccalaureate Maritime	2,976	0.23 %

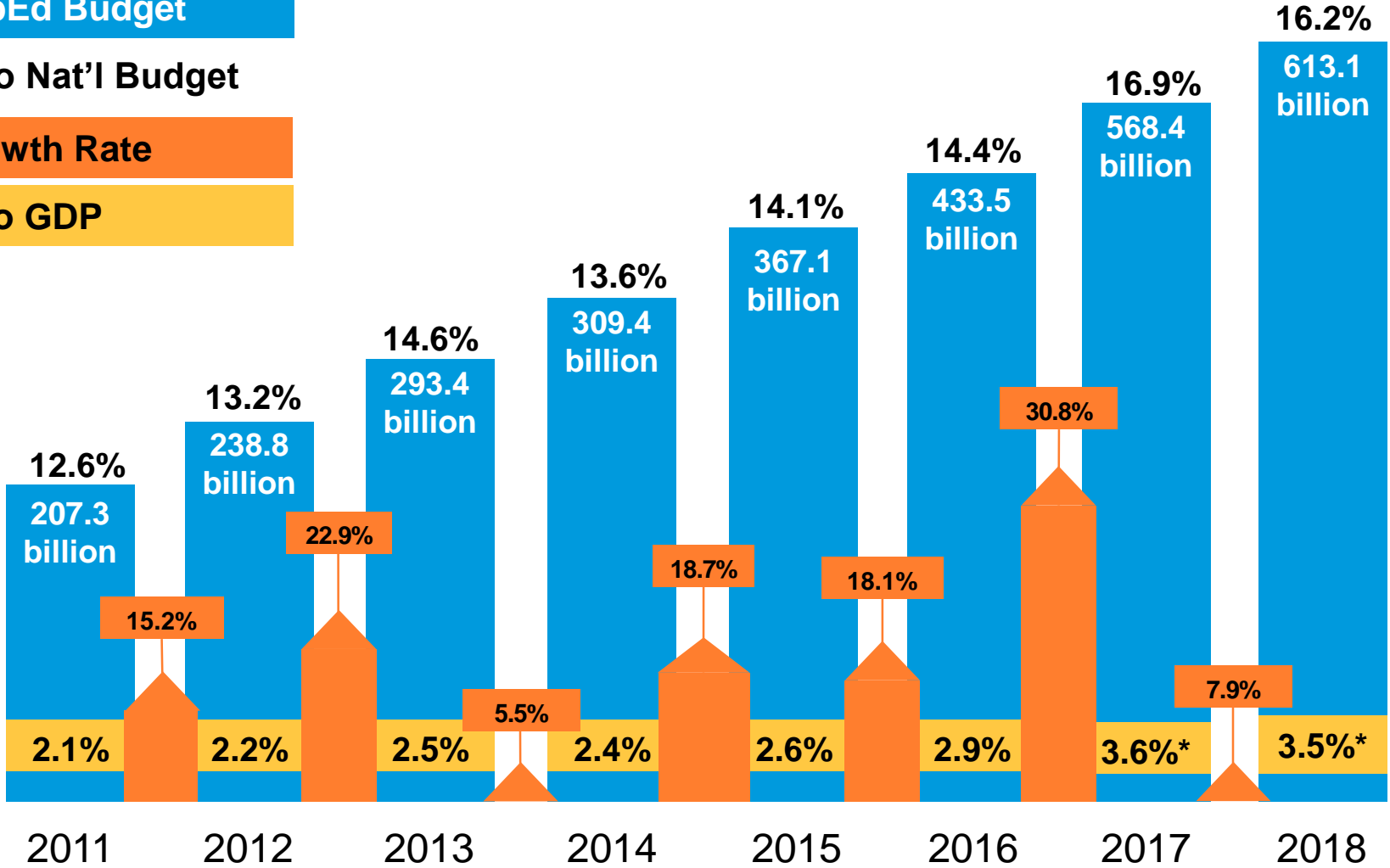
BUDGET

DepEd Budget

% to Nat'l Budget

Growth Rate

% to GDP



* Based on GDP forecast



KEY



PERFORMANCE

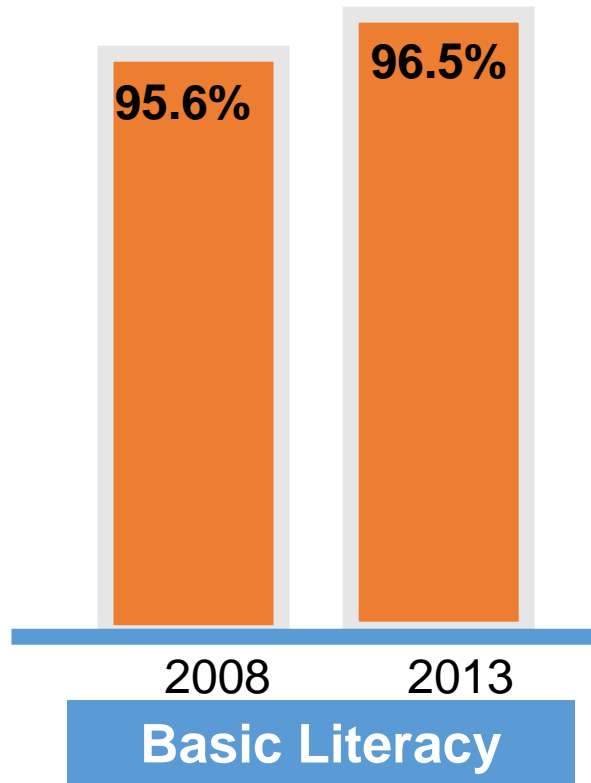


INDICATORS

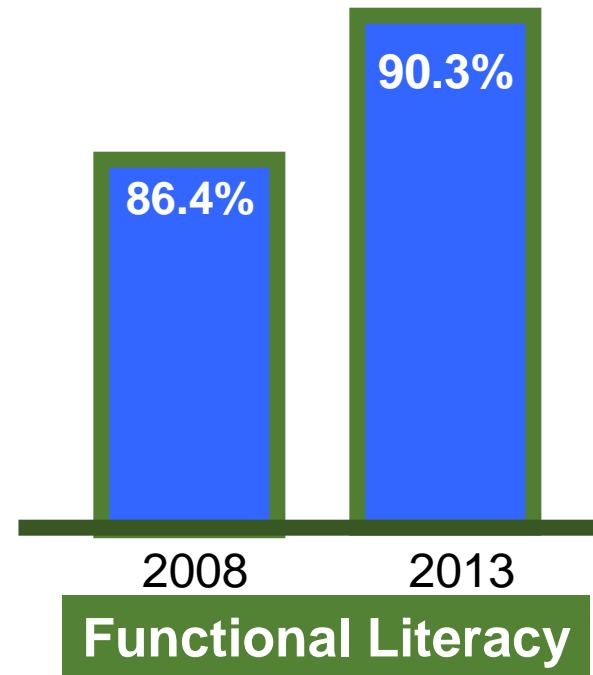
SY 2016-2017



LITERACY RATES

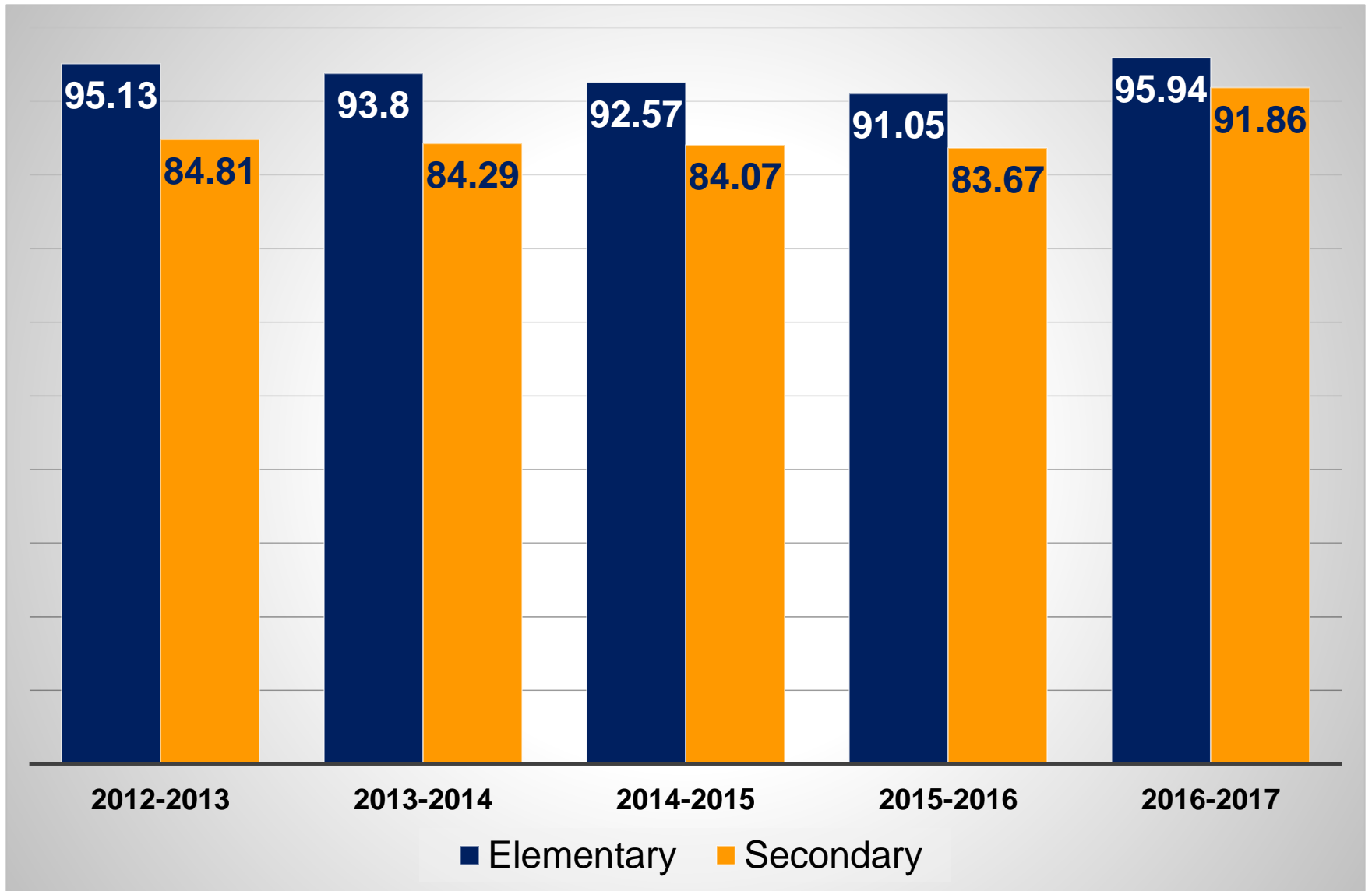


Basic Literacy – ability of a person to read and write with understanding simple messages in any language or dialect

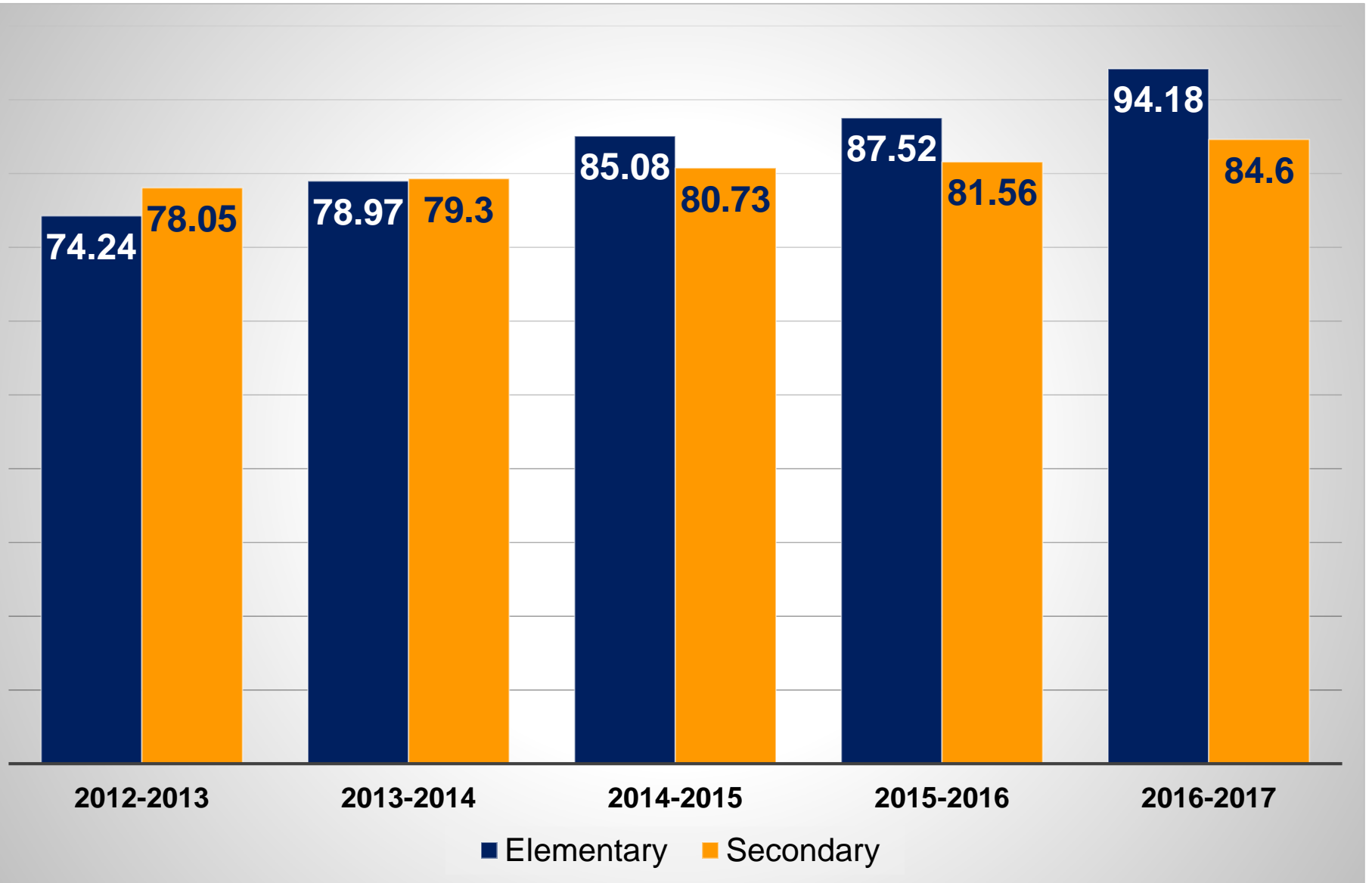


Functional Literacy – significantly higher level of literacy which includes not only reading and writing but also numeracy skills

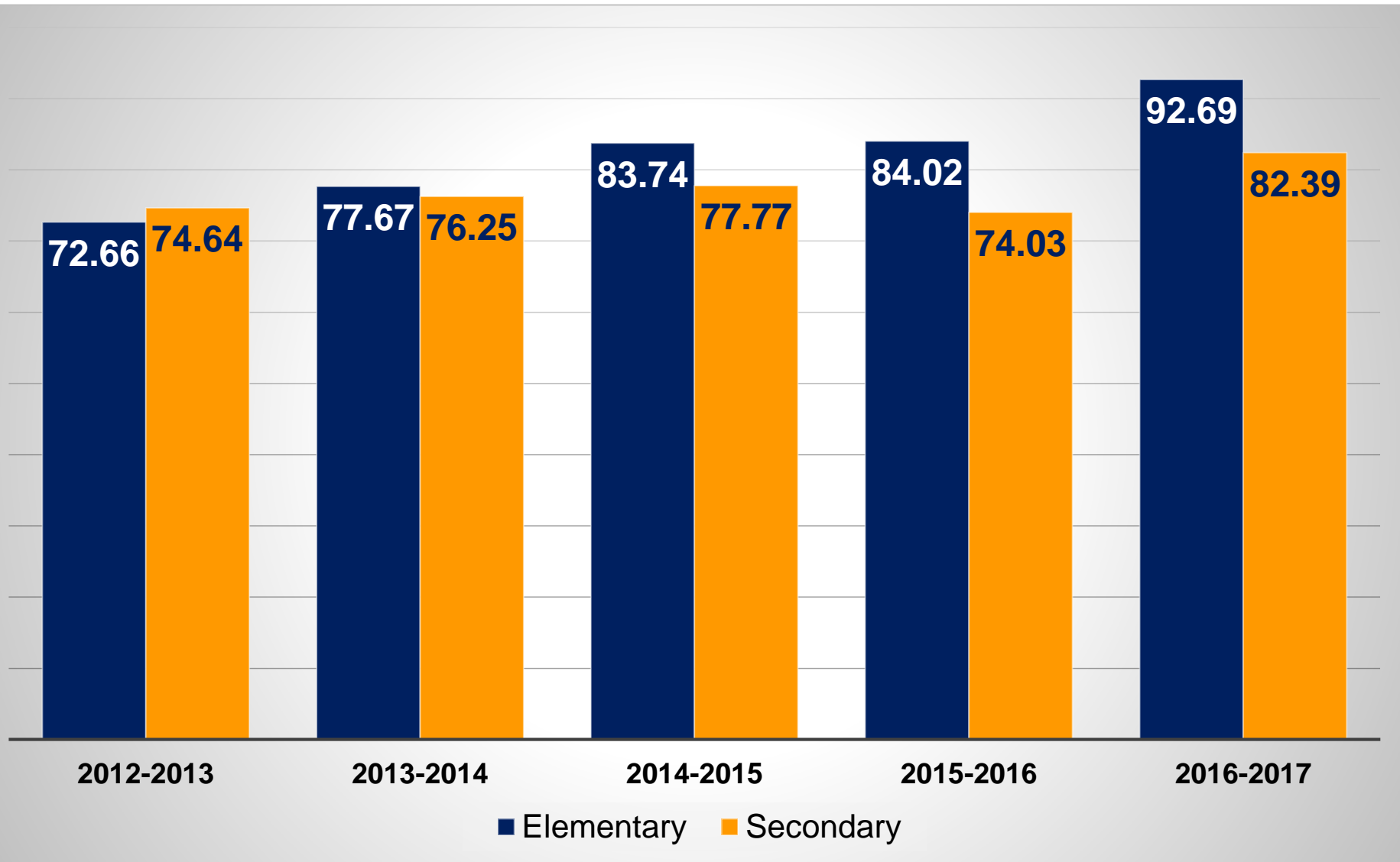
PARTICIPATION RATE



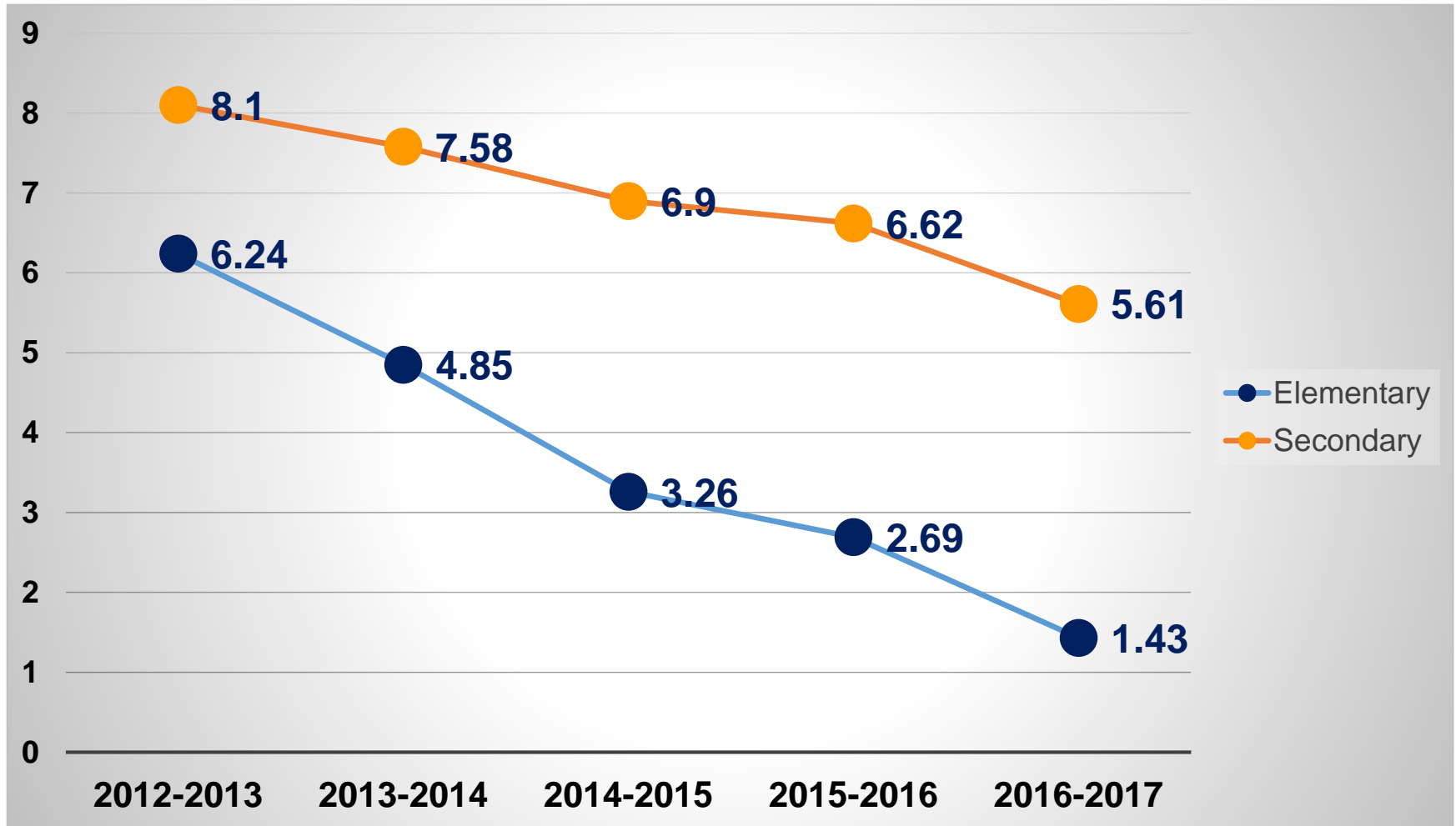
COHORT SURVIVAL RATE



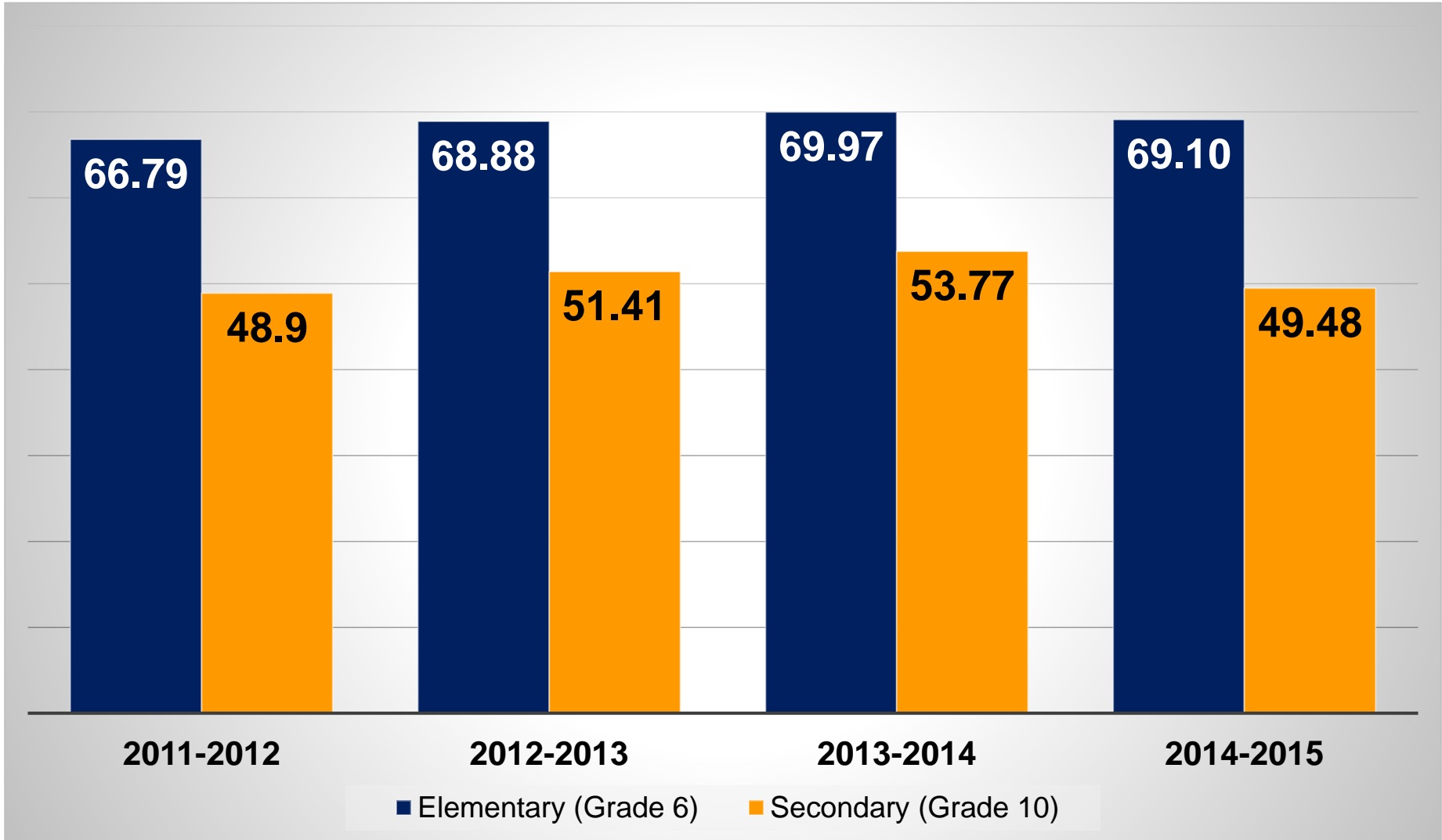
COMPLETION RATE



SCHOOL LEAVERS RATE



ACHIEVEMENT RATE



SY 2015-2016 NAT was not administered



DEPED



STRATEGIC



DIRECTIONS



PLANNING ENVIRONMENT

LONG-TERM



Sustainable Development Goals (Goal 4) – 2030

Quality and Inclusive Education



Ambisyon Natin 2040

The Philippines shall be a country where all citizens are free from hunger and poverty, have equal opportunities, enabled by fair and just society that is governed with order and unity. A nation where families live together, thriving in vibrant, culturally diverse, and resilient communities.

PLANNING ENVIRONMENT

MEDIUM-TERM



Philippine Development Plan (PDP) 2017-2022

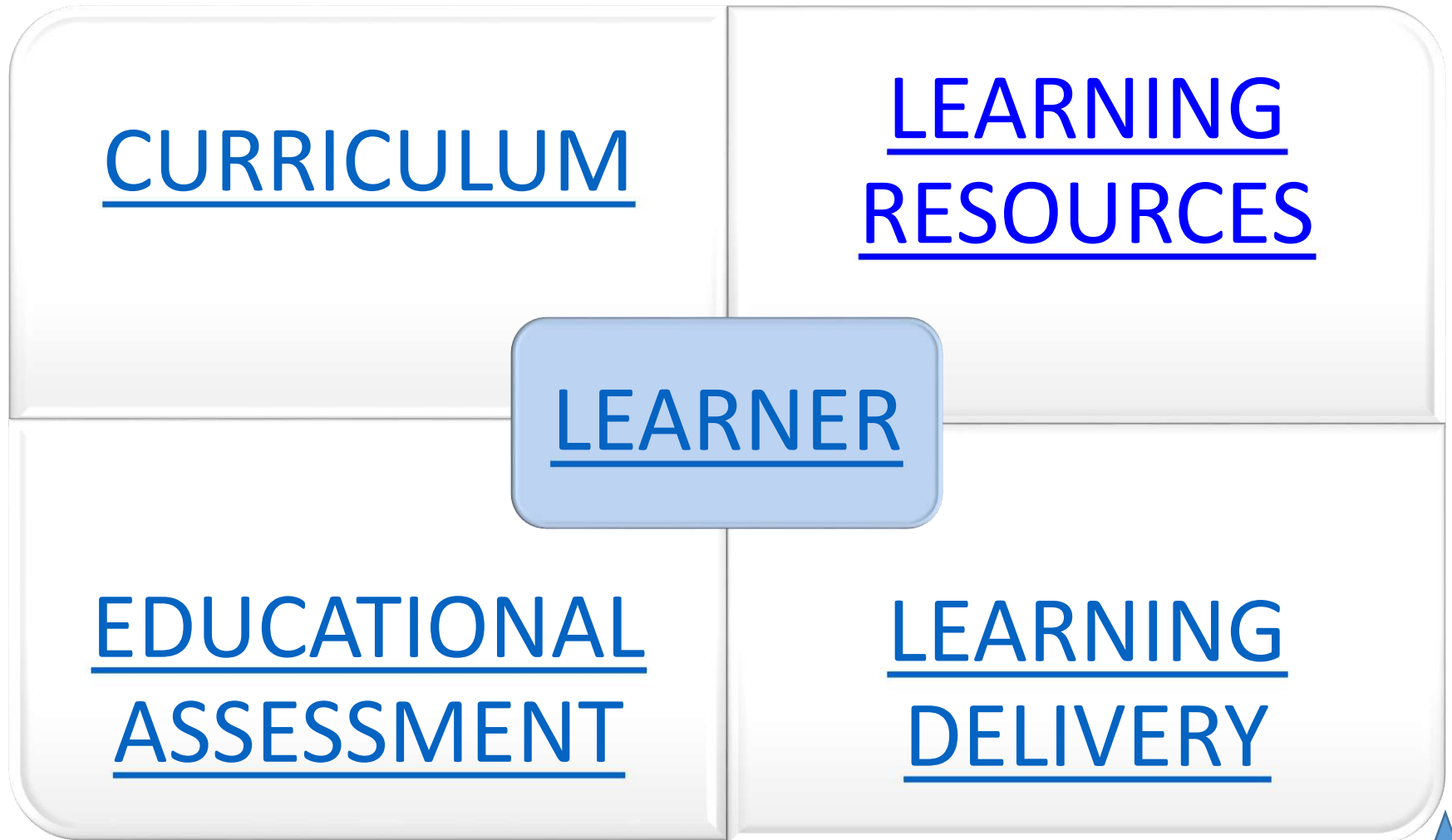
Lifelong Learning Opportunities for All:
Reducing Inequalities in Human Development



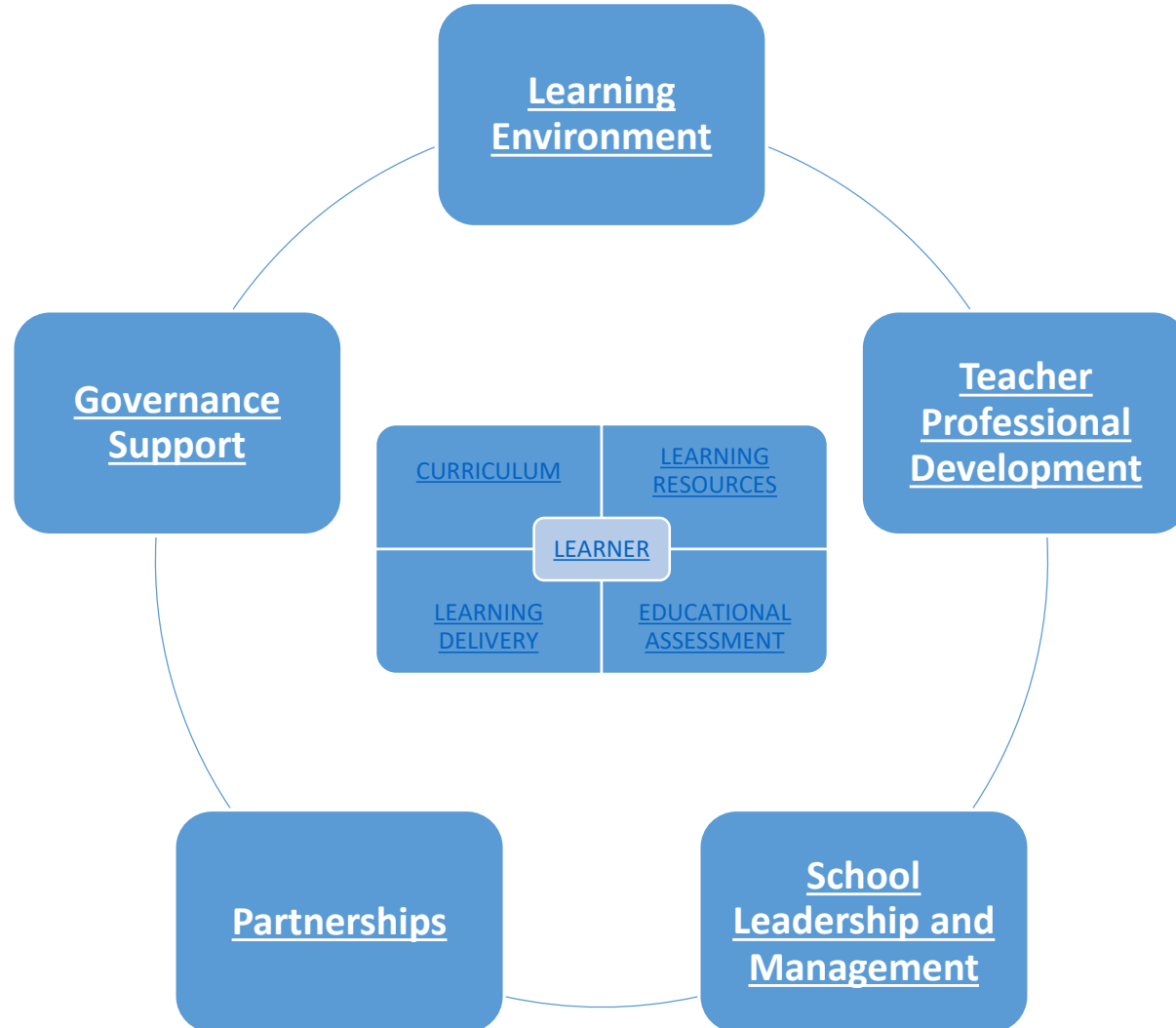
SLMB's 10-point Agenda

Quality, Accessible, Relevant and
Liberating Education

KEY DIMENSIONS: Inclusive Education



KEY DIMENSIONS: Inclusive Education



The K to 12 Philippine Basic Education Curriculum Framework



Higher Education



Employment



Entrepreneurship



Middle Level Skills
Development

Holistically Developed Filipino with 21st Century Skills

Being and Becoming a Whole Person

SKILLS

Information, Media, and Technology Skills
Learning and Innovation Skills
Communication Skills
Life and Career Skills

LEARNING AREAS

Language
Technology and Livelihood Education (TLE)
Mathematics and Science
Arts and Humanities

Curriculum Support System

<i>Teachers</i>	<i>Materials, Facilities, and Equipment</i>	<i>ICT</i>	<i>Assessment</i>	<i>School Leadership and Management</i>	<i>Schools Divisions Technical Assistance</i>	<i>Community- Industry Relevance and Partnerships</i>
-----------------	---	------------	-------------------	---	---	---

Monitoring and Evaluation System

PLANNING ENVIROMENT AND M&E FRAMEWORK

Goal:

All Filipinos are able to realize their full potential and contribute meaningfully to building a cohesive nation

Outcome:

Holistically developed Filipinos with 21st Century skills ready for higher education, entrepreneurship , work and middle level skills development

Intermediate Outcomes:

Learners are well-rounded, happy and smart

Learners are in school and learning centers

Learners access programs responsive to their needs and consistent with their interests and aptitudes

Learners actively participate in a learner-friendly environment

Learners complete education and attain learning standards

Enabling Environment

Education leaders and managers practice participative and inclusive management processes.

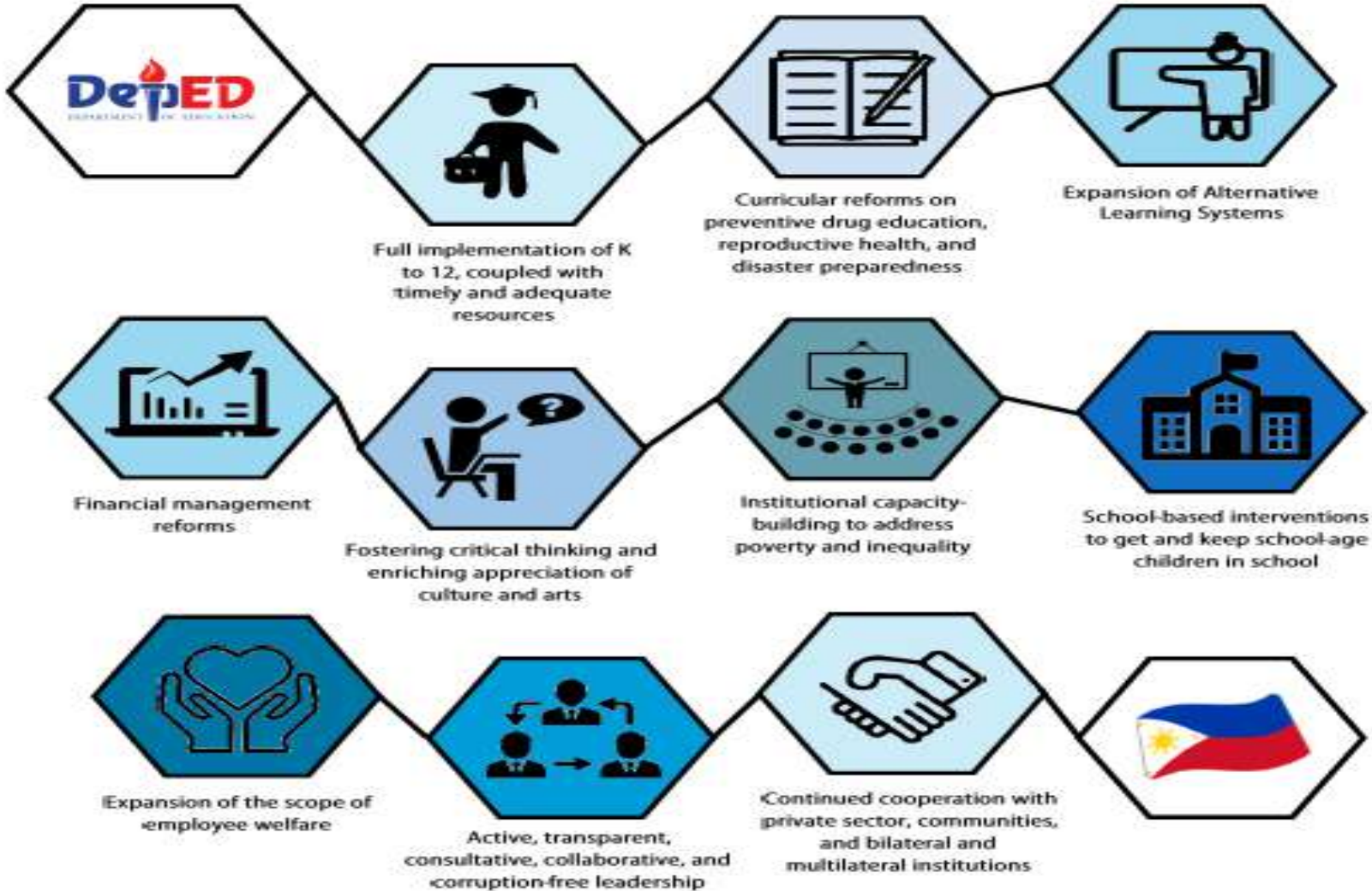
Investments in Basic Education provides learners with ideal learning environment

People, internal systems, and processes serve learners better through continuous improvement efforts

Key stakeholders actively collaborate to serve learners better

10-Point Agenda

“Quality, Accessible, Relevant, and Liberating Basic Education for All”



DEPED STRATEGIC DIRECTIONS (2017-2022)

TEAM VISION

By 2022, we will have nation-loving and competent lifelong learners able to respond to challenges and opportunities through quality, accessible, relevant and liberating K to 12 Program delivered by a modern, professional, pro-active, nimble, trusted and nurturing DepEd

STRATEGIC GOAL

Expand Access to Basic Education

Improve Quality and Relevance

Modernize Education Management & Governance

STRATEGIC OBJECTIVES (Strategies)

- Expand coverage of Inclusion Programs
- Expand access to Secondary Education
- Provide non-classroom facilities in remote and isolated schools
- Improve Partnership building and linkages

- Full implementation of K to 12 Program
- Improve Quality of Teachers
- Expand the use of Technology for Learning
- Enrich curricula to address cross-cutting issues and foster critical thinking towards Liberating Basic Education

- Automate core systems and processes (e-Governance)
- Improve Procurement Process
- Accelerate Research & Dev't
- Improve DepEd Independence from interference
- Improve Human Resource and Development

PROGRAMS, PROJECTS AND ACTIVITIES

Strategic Goal	Core Strategies (Objectives)	Programs, Projects and Activities
Expand Access to Basic Education	Expand coverage of Inclusion Programs	<ul style="list-style-type: none"> • Multigrade Education • Madrasah Education Program • Indigenous Peoples Education (IPEd) Program • Special Education Program • Alternative Learning System and ADMs • Special Interest Programs • Child Protection Program • School-Based Feeding Program
	Expand access to Secondary Education	<ul style="list-style-type: none"> • Convert all Incomplete schools into MG school • Establish/Open more Junior and Senior High Schools • Expand Coverage of ESC, Voucher Program and Joint Delivery Strategy for TVL
	Provide non-classroom facilities in remote and isolated schools	<ul style="list-style-type: none"> • Build Dormitories to school that are remote and geographically isolated • Accelerate Pedals and Paddles project
	Improve Partnership building and linkages	<ul style="list-style-type: none"> • Strengthen Brigada Eskwela • Expand Adopt a School Program

PROGRAMS, PROJECTS AND ACTIVITIES

Strategic Goal	Core Strategies (Objectives)	Programs, Projects and Activities
Improve Quality and Relevance	Full implementation of K to 12 Program	<ul style="list-style-type: none"> • School Facilities • Teaching Positions and Non-Teaching Positions • Tools and Equipment (by strand) • Assessment • Textbooks and other Instructional Materials
	Improve Quality of Teachers	<ul style="list-style-type: none"> • Adoption of the Philippine Professional Standards for Teachers • Intensive Capacity Building for Teachers and Instructional Leaders for curriculum alignment with learner-centered pedagogies and assessment in the formal system and in the ALS • Enhance Teacher Quality from pre-service thru the TEC and with CHED and TESDA, other education stakeholders • Improve hiring and promotion policy
	Expand the use of Technology for Learning	<ul style="list-style-type: none"> • Enhance computer aided teaching-learning • Computerization Program • Learning Tools and Equipment • Expand access to Learning Resource Portal • Internet Connectivity
	Enrich curricula to address cross-cutting issues and foster critical thinking towards Liberating Basic Education	<ul style="list-style-type: none"> • Co-curricular school-based and off-campus activities • Drug Prevention Education • Gender and Development • Climate Change Mitigation and Adaptation • Financial Literacy • Entrepreneurship

PROGRAMS, PROJECTS AND ACTIVITIES

Strategic Goal	Core Strategies (Objectives)	Programs, Projects and Activities
Modernize Education Management and Governance	Automate core systems and processes (e-Governance)	<ul style="list-style-type: none"> • Strengthen existing Information Systems • Develop and Implement FMIS and other system that would improve operations, cut-down red tape and ensure full transparency • Connect all operating Units
	Improve Procurement Process	<ul style="list-style-type: none"> • Improve Procurement Planning • Improve Planning Process
	Accelerate Research and Development	<ul style="list-style-type: none"> • Action Research • Accelerate Impact Evaluation
	Improve DepEd Independence	<ul style="list-style-type: none"> • Evidence-based planning and policy development • Improve Monitoring and Evaluation System
	Improve Human Resource and Development	<ul style="list-style-type: none"> • Improve leadership and management skills of DepEd Officials • Expand Employee Welfare Program • Capacity Building for Non-Teaching Personnel

PDP TARGETS

Indicators	Baseline	Targets						
	2015	2016	2017	2018	2019	2020	2021	2022

By 2022, proportion of School Aged population participating in basic education increased (Net Enrolment Ratio)

Kinder	74.65%	77.56%	80.46%	83.37%	86.28%	89.19%	92.09%	95.00%
Elementary	91.05%	91.61%	92.18%	92.74%	93.31%	93.87%	94.44%	95.00%
Junior High School	68.15%	69.19%	70.23%	71.27%	72.32%	73.36%	74.40%	75.44%
Senior High School	No Baseline Yet							

By 2022, proportion of Learners who enrolled in Grade 1/Grade7 completing Levels of Education increased (Completion Rate)

Elementary	83.43	84.37%	85.31%	86.25%	87.18%	88.12%	89.06%	90.00%
Junior High School	73.97	76.49%	76.82%	77.15%	77.48%	77.82%	78.15%	78.48%
Senior High School	No Baseline Yet							

PDP TARGETS

Indicators	Baseline	Targets						
	2015	2016	2017	2018	2019	2020	2021	2022

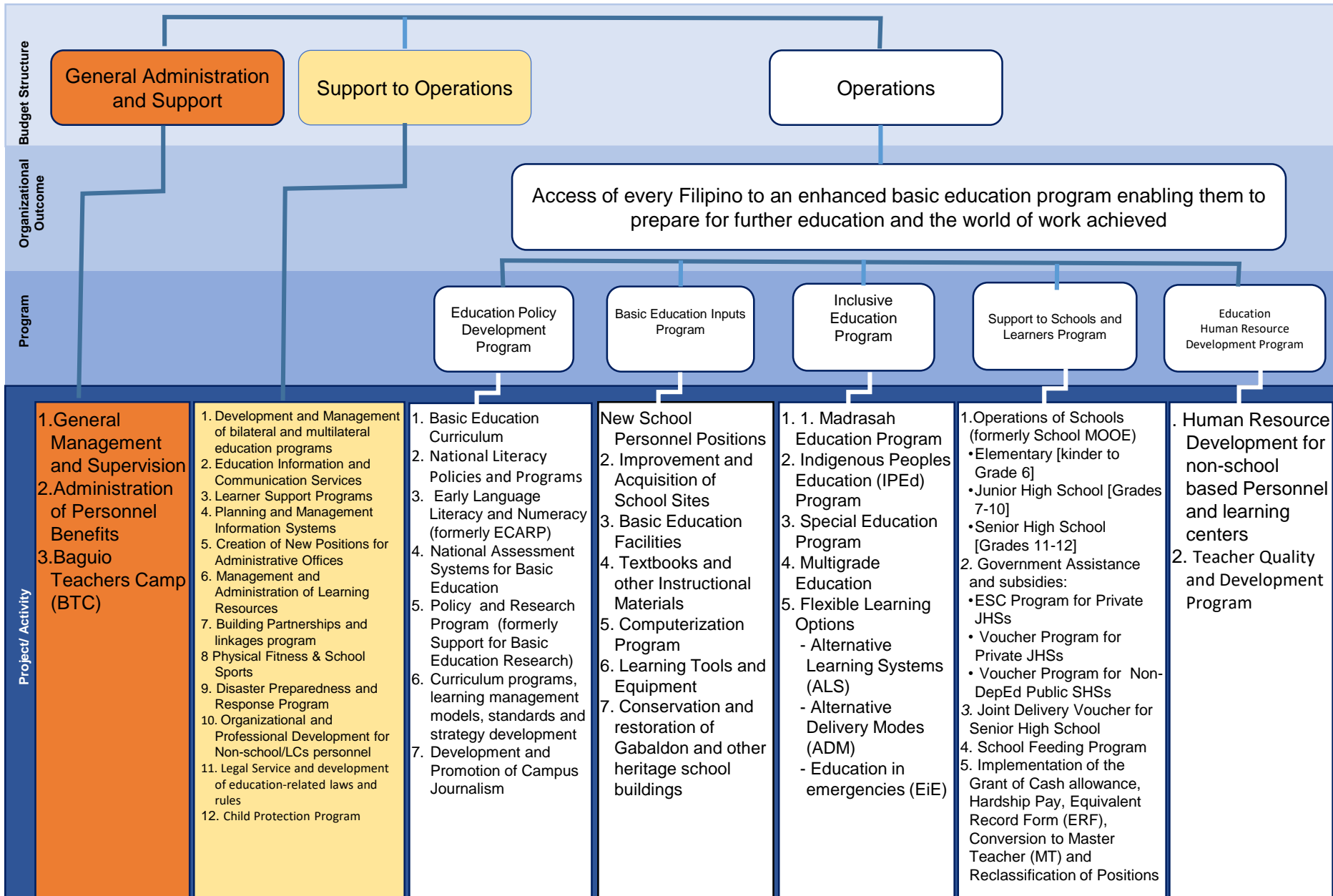
By 2022, proportion of students performing at Moving towards mastery, closely approximating mastery and mastered increased from 63.93% to 74.39%

Elementary	63.93%	65.42%	66.92%	68.41%	69.91%	71.40%	72.89%	74.39%
------------	--------	--------	--------	--------	--------	--------	--------	--------

By 2022, proportion of students at low mastery reduced from 14% to 10%, and students at moving towards mastery increased from 14% to 20%

Junior High School	14.37%	15.17%	15.98%	16.78%	17.59%	18.39%	19.20%	20.00%	
	14.88%	11.92%	11.72%	11.51%	11.31%	11.11%	10.90%	10.00%	
Senior High School	No Baseline Yet								

PROGRAM EXPENDITURE CLASSIFICATION (PREXC)





OUR



IMMEDIATE



PRIORITIES FOR

FY 2018

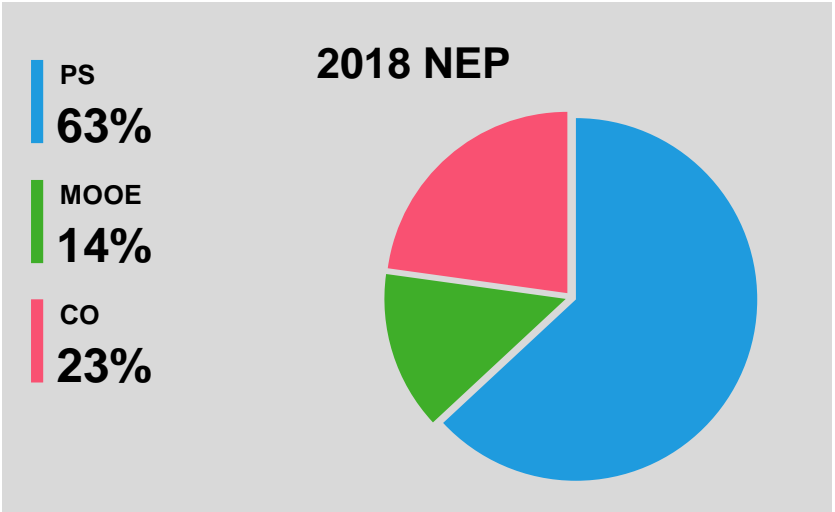
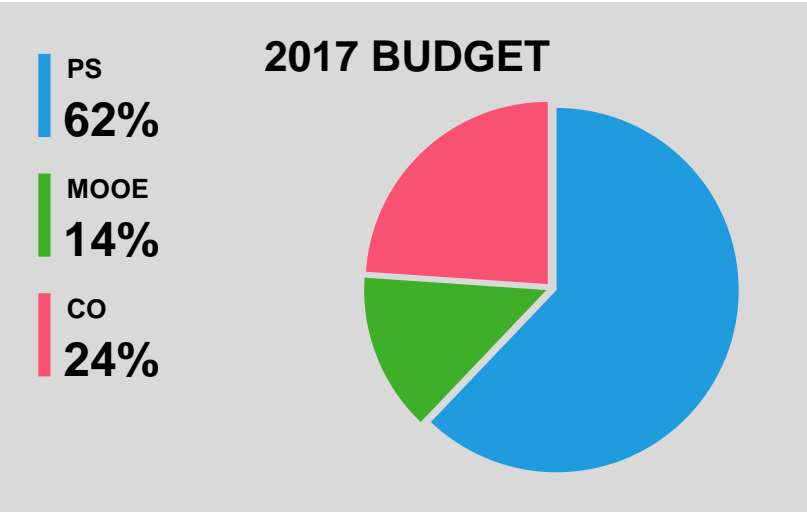


DepEd Proper Budget with RLIP

(In Million Pesos)

PARTICULARS	2017 BUDGET	2018 NEP	INC/(DEC)	
			Amount	%
Personnel Services	352,212	386,102	33,890	9.6%
Maintenance and Other Operating Expenses	79,240	86,410	7,170	9.1%
Capital Outlay	135,640	139,605	3,965	2.9%
TOTAL OBLIGATIONS	567,092	612,117	45,025	7.9%

*Retirement and Life Insurance Premium



DepEd continues to provide basic education resources to support the K to 12 program



81,100 Total New Teachers items

43,732 Kinder/Elementary

1,944 SPED centers/classes (elem)

35,192 Junior High School

232 Senior High School



38.9M Total Learning Materials

3.9M Activity Sheets

35M Textbooks

P 2.99B



DepEd continues to provide basic education resources to support the K to 12 program



46,998 New construction of classrooms
P70.55B



81,201 Sets of school seats
P3.48B



Electrification of 2,398 On-grid schools
P2.97B



24,076 Construction of workshops and laboratories
P36.11B



DepEd continues to provide basic education resources to support the K to 12 program



22,046 ICT packages
P8.66B



1,365 Schools to receive TechVoc tools and equipment
P4.6B



3,183 Sets of Science and Math equipment packages
P3.2B



2.5M Learners benefited from School-based Feeding Program
P5.3B



Providing for government assistance and subsidy to 2.8 M secondary learners in private schools

Education Service Contracting (ESC)

1,077,230 students

35,945 teachers

P10.67B

Voucher Programs for Non-DepEd Public Senior High Schools and SUCs/LUCs

78,250 students

P742M

Voucher Program for Private Senior High School (SHS)

1,577,722 students

P26.7B

Joint Delivery Voucher for Senior High School

115,996 students

P1.2B



Providing for additional compensation and professional development for our personnel



**Provision for Special
Hardship Allowance**
P2.1B

**Magna Carta for
Public Health
Workers**
P483 Million

**Honoraria for
Teaching Overload**
P303.1 Million



**Salaries of Substitute
Teachers and other Non-
Permanent Positions**
P2.45B

**Provision of Retirement
and Terminal Leave
Benefits of Mandatory
Retirees**
P 1.2B



**Human Resources
Training and
Development for
school and non-
school personnel**
P3.8B





A Peaceful & Happy Journey



God bless.



**Move on
with Love!**

From:

Lorna Dig Dino

Undersecretary for Curriculum and Instruction

Department of Education

November 28, 2017